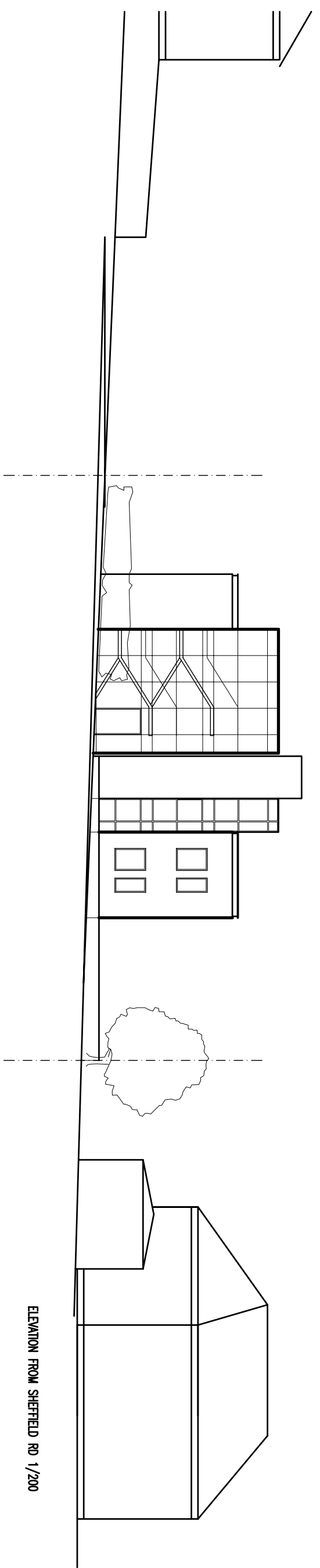


© SWANKE HAYDEN CONNELL INTERNATIONAL LIMITED
 THE ELECTRONIC INFORMATION IS CONFIDENTIAL AND THE PROPERTY OF SWANKE HAYDEN CONNELL INTERNATIONAL LTD. NO USE IS PERMITTED OF IT OTHER THAN BY THE INTENDED RECIPIENT FOR THE PURPOSES FOR WHICH IT BE PROVIDED OR PASSED ON TO ANY OTHER PARTY IN ANY FORM IN WHOLE OR IN PART. ANY UNAUTHORIZED REPRODUCTION OR DISSEMINATION OF THE DATA IS STRICTLY PROHIBITED AND WILL BE PROSECUTED TO THE FULL EXTENT OF THE LAW. THE ORIGINAL INFORMATION IS THE HARD COPY WHICH WILL BE SUPPLIED ON REQUEST. THE ELECTRONIC DATA LINKS SPECIFICALLY SHOWN ON THE HARD COPY, BE ACCEPTED NO LIABILITY FOR ANY EFFECT THAT THE TRANSMISSION OR USE OF ANY DATA LINKS MAY HAVE ON ANY COMPUTER OR SYSTEMS NETWORK OR NETWORKS. SWANKE HAYDEN CONNELL INTERNATIONAL LIMITED ACCEPTS NO LIABILITY FOR THE LOSS OF OR DAMAGE TO ANY DATA OR INFORMATION AND OPENING OF THE FILES CONSTITUTE ACCEPTANCE OF THESE TERMS.



ELEVATION FROM HAZLEHURST LN 1/200



ELEVATION FROM SHEFFIELD RD 1/200

Rev. Date Description
SWANKE HAYDEN CONNELL ARCHITECTS

Swanke Hayden Connell International Limited
 15 Hazelhurst Lane, Sheffield, S10 1BP
 Tel: 0870 010 8000 Fax: 0870 010 8001

Job Title
Proposed Housing Development
 On Land Adjacent To
 15 Hazelhurst Lane
 Chesterfield

Title
Front Elevations

Drawing Status
PLANNING

Drawn By
 HD
 Checked By
 DAG

Scale
 1:200 (A3)
 Date
 JUN 07

Project No.
 2436
 Drawing No.
 A014
 Rev.
 C