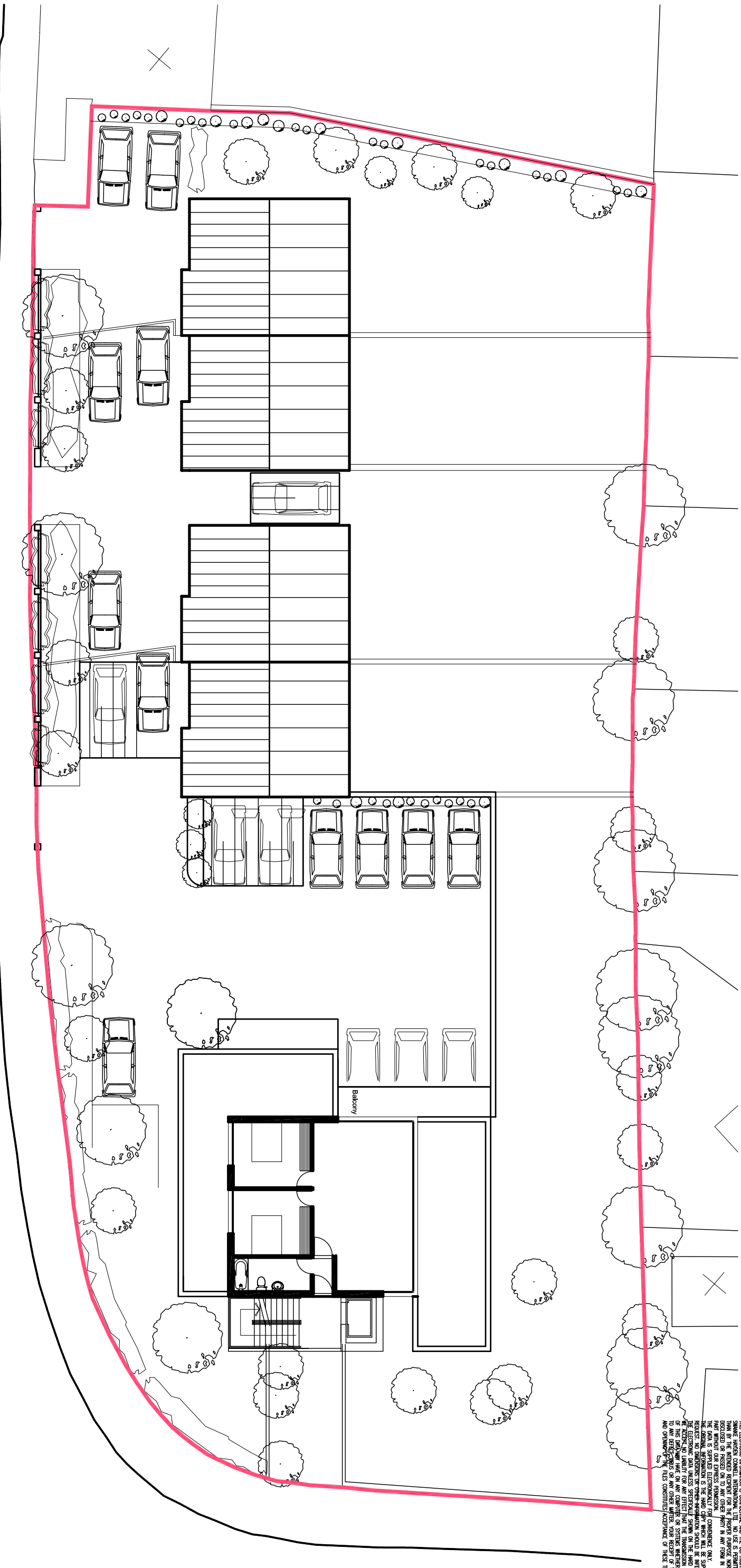


THE ELECTRIC INFORMATION IS CONFIDENTIAL AND THE COPYRIGHT OF SWANKE HAYDEN COUNELL INTERNATIONAL LTD. NO USE IS PERMITTED OF THIS INFORMATION FOR ANY OTHER PROJECT WITHOUT THE WRITTEN PERMISSION OF SWANKE HAYDEN COUNELL INTERNATIONAL LTD. ANY REPRODUCTION OR TRANSMISSION OF THIS INFORMATION IN ANY FORM IN WHOLE OR IN PART WITHOUT OUR EXPRESS PERMISSION IS PROHIBITED. ANY REQUEST FOR REPRODUCTION OF THIS INFORMATION WILL BE SPURRED ON BY THE CLIENT. NO DIMENSIONS OR OTHER INFORMATION SHOULD BE INFERRED FROM THE ELECTRIC DATA UNLESS SPECIFICALLY STATED ON THE DRAWING. THE ELECTRIC INFORMATION IS THE PROPERTY OF SWANKE HAYDEN COUNELL INTERNATIONAL LTD. AND IS NOT TO BE REPRODUCED OR TRANSMITTED IN ANY FORM OR BY ANY MEANS, ELECTRONIC OR MECHANICAL, INCLUDING PHOTOCOPYING, RECORDING, OR BY ANY INFORMATION STORAGE AND RETRIEVAL SYSTEM, WITHOUT THE WRITTEN PERMISSION OF SWANKE HAYDEN COUNELL INTERNATIONAL LTD. ANY REPRODUCTION OR TRANSMISSION OF THIS INFORMATION AND OPENING UP THE FILE IS CONSIDERED ACCEPTANCE OF THESE TERMS.

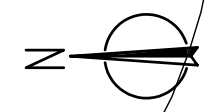


HAZLEHURST LANE

SWANKE HAYDEN COUNELL ARCHITECTS

Swanke Hayden Counell International Limited
 One House Turner Lane, Sheffield S10 1BP
 TEL: 0870 010 8800 FAX: 0870 010 8811

Proposed Housing Development
 On Land Adjacent To
 15 Hazlehurst Lane
 Chesterfield



Penthouse Plan

PLANNING

Drawn By	Checked By
HD	DAG
Date	Date
1:200 (A3)	JUN 07
Project No.	Drawing No.
2436	A016